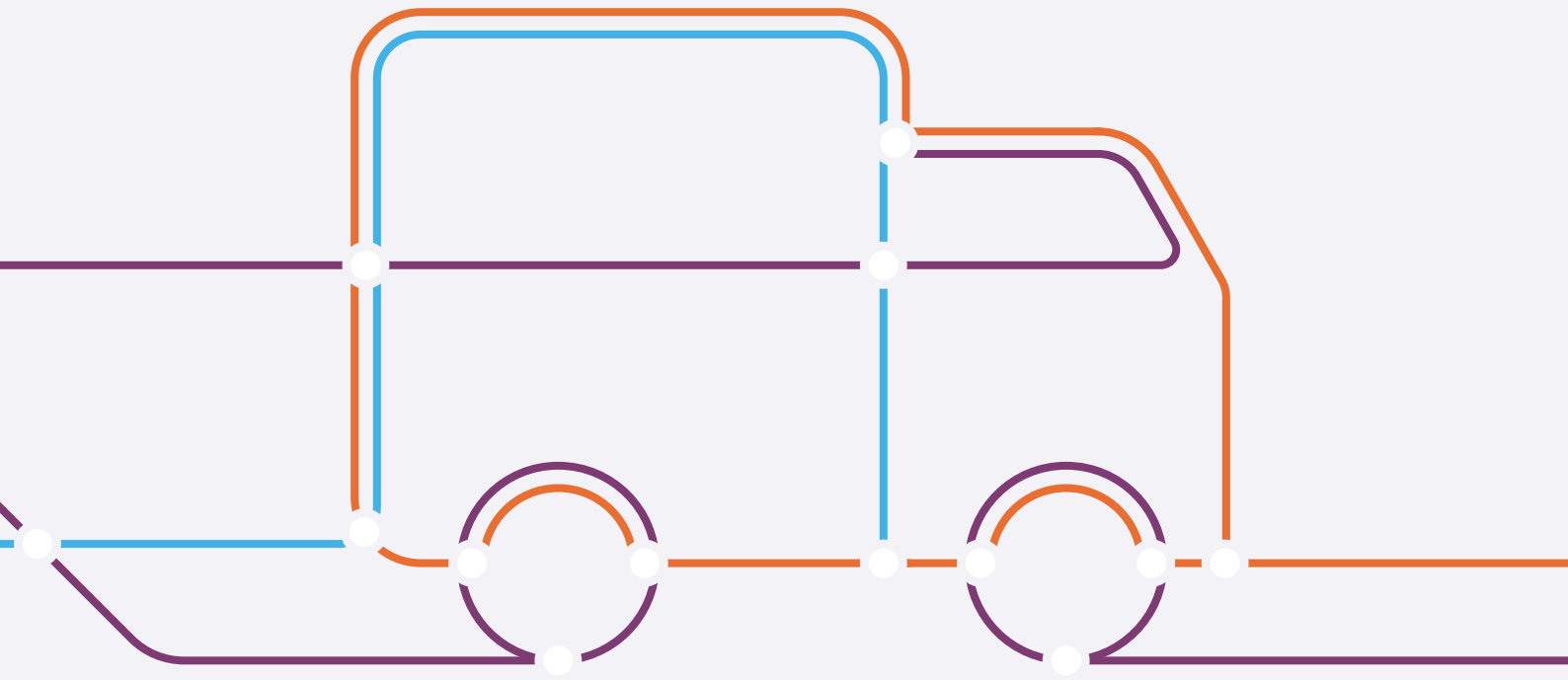


PRONTO xi



Pronto Xi  
Inventory

Pronto Software, Pronto Xi, the Pronto interrobang logo and the P interrobang logo are all registered trademarks of Pronto Software Limited. All other marks are the property of their respective owners.

Copyright © 2019 Pronto Software Limited (ABN 47001337248).

**Disclaimer**

This document contains statements related to our current and future developments that may constitute forward-looking statements, or be subject to change. Features described may be added or removed in future releases of Pronto Xi and may not be available in all regions.

# Pronto Xi Inventory

## Contents

4	<b>Pronto Xi Inventory</b>
6	Inventory maintenance
8	Inventory master fields
10	Inventory transactions
11	Budgets
12	Kits
13	Stocktake

# Pronto Xi Inventory

## Keep track in any field

Pronto Xi Inventory efficiently controls all your product flows.

Because most changes to inventory levels are the result of processing in other modules – such as Purchasing and Manufacturing – you have complete visibility and can track your inventory by warehouse.

Pronto Xi Inventory includes:

- Multiple warehouses, suppliers and prices per item
- Multiple Units of Measure (UOM) and full First-In-First-Out (FIFO)
- Support for Global Trade Item Number (GTIN) barcodes
- Standard, Average, FIFO, Actual and Replacement costing
- Serial number and lot tracking
- Item licences
- Full stocktake/cycle counting
- Interactive image display for products
- Item attributes
- Automated reordering and replenishment

The screenshot displays the 'Inventory Maintenance/Enquiry' window for item SCT567. The interface is organized into several sections:

- Item Details:** Item Code: SCT567, Description: 4th GEN Mountain Bike, 26inch frame, Alloy with disc brakes, APN: 098764ABCD000055, Created: 02-NOV-2017.
- Hierarchy:** Division: DIV1, Department: HOBB, Category: MOU, Class: BIKE, Group: OUT.
- Item Type:** Item Type: S, Condition: A, ABC Class: B, Process Requirement: [empty], Warranty: B, Cyclic code: M, Movement Type: [empty], Shelf Life: [empty], Stock User: I, Sales Type: M, User Group: BG, Storage Type: B, Traceability: N, Sort Code: 0101, Brand: GENERIC, Brand Desc: Generic Brand.
- Item Dimensions:** Unit Description: EACH, Conversion Factor: 1.0000000, Pack Description: EA, Pack Quantity: 1, Pack Cubic Size: 40.000000, Pack Weight: 6.0000 kg/ft, Import Tariff: RATE10.
- Item Costs:** Standard: 750.0000 per 1, Replacement: 740.0000, Sales Cost: 760.0000, Price Level 0: [empty], Price Plus Tax: 0.000, Alcohol %: [empty], Costing BOM ID: 0.
- Storage Details:** Warehouse: MEL, Bin: [empty], Stock on Hand: 0, Current Commit.: 0, POs + In Transit: 0, Available for Sale: [empty], Date Last Sold: [empty].
- Planning and Control:** Reorder Policy: Y (Min/Max & Days), Planning Policy: D (Daily), Buyer/Planner: C (Colin), Origin Flag: [empty], Origin Source: S, Price Protection: Y, Allocation Code: AUTM.

Understand your inventory at a glance

## Inventory master

Pronto Xi Inventory records all the information and transaction history of an item. To create or maintain an item, you can use the main inventory maintenance screen or industry-specific screens. Chemical, paper, retail, wholesale distribution, timber and mining are some of the industries with specialised maintenance screens.

The different types of items handled include:

- **Stocked or standard** – a normal, saleable item, which is typically purchased but can also be manufactured
- **Manufactured** – manufactured items that have components, a bill of material (BOM) and routings
- **Raw materials** – items that are not saleable and do not have a BOM, but can be transferred using a transfer sales order
- **Indent** – items that are not normally held in stock, but purchased subject to a sale
- **Kit** – a combination of various types of items
- **Labour** – items that can have a cost and a selling price but there is no necessity to control quantity on hand (eg. items used as components to cost labour in a BOM or in kits)
- **Specials** – items that can have a cost and a selling price but because they are generally used to control cost overhead recovery or consumables (eg. expense items such as stationery, electricity), there is no necessity to control quantity on hand

Inventory Master records can also include additional information or notes such as hazardous or dangerous goods documentation.

## Process requirements - managing multiple processes

Pronto Xi Inventory provides you with the flexibility to manage multiple processes for the single inventory item. For example you may have an item that needs to be configured as back-flushed in line with your manufacturing process but also requires license controls. The process requirement functionality enables you to simply configure the required options in one easy step.

**Additional Processing Control**

**Measuring**

- Not Applicable
- Lineal Metre
- Square Metre
- Cubic Metre
- Weighed/Measured

**Manufacturing**

- Not Applicable
- Phantom Item
- Disassembly Item
- Item Backflushed
- Components Backflushed

**Licences**

- Not Applicable
- Licensed Item
- Tobacco Item

**Packaging**

- Not Applicable
- Packaging Item
- Packaging Material

**Miscellaneous**

- Local Warehouse Item
- Outside Work Item
- Phone Number (POS)
- Rebate Item

**OK** **Cancel**

Classify and control inventory within your warehouse

## Inventory maintenance

In Pronto Xi Inventory, the main inventory maintenance screen provides detailed information about items. Its menu options give you access to additional screens for warehouses, suppliers, pricing, alternatives, notes, BOM and more.

### Warehouses

You can maintain pick and bulk locations against each warehouse. Additional tracking of inventory is available in Pronto Xi Warehouse Management System.

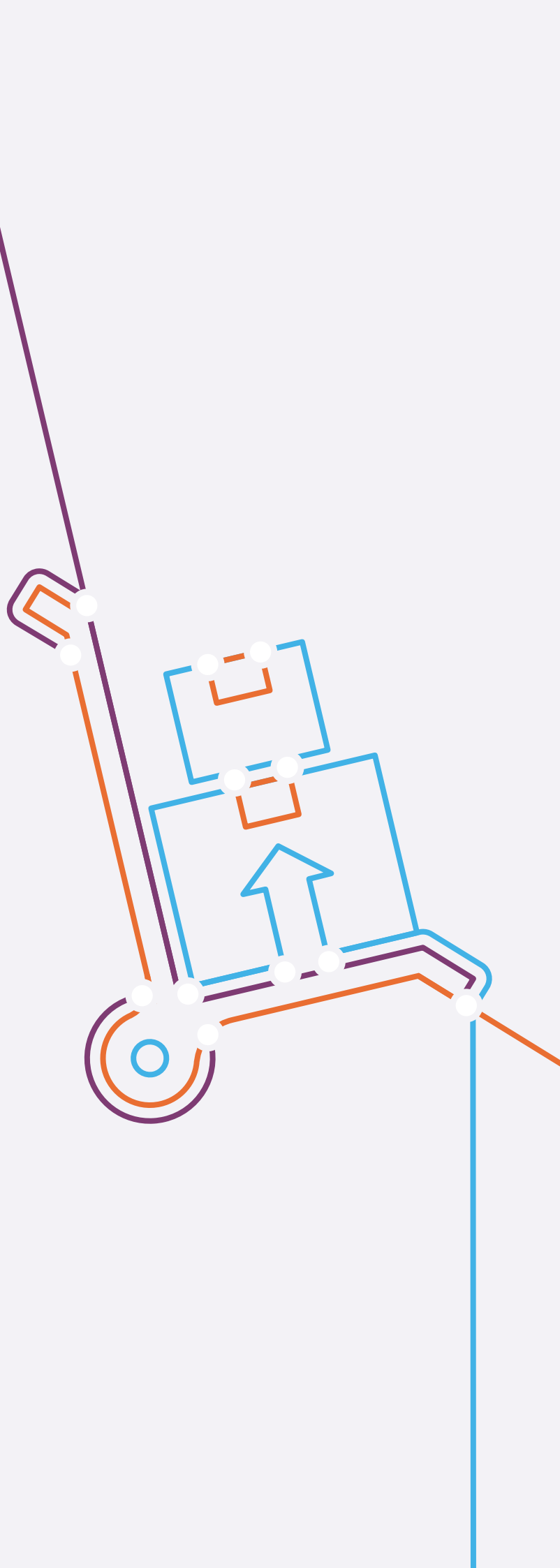
Pronto Xi Inventory records and tracks movements, costs and commitments for each item in each warehouse. You can use this information for reordering requirements, while the warehouses screen allows you to:

- Determine inventory postings to the general ledger
- Record sales history
- Automatically receive items from other warehouses via internal transfer orders

Various types of warehouses are accommodated, such as standard and advanced warehouses, factory, service van (inventory stored in fleet vehicles) and consignment.

Detailed inventory-level information is kept for each warehouse where an item is held. This includes stock on hand, commitments to various kinds of orders and what is on order from suppliers.

A summary of the inventory movements in each warehouse is recorded and displayed by transaction type.



INV M138 Supplier For Item : SCT567

Find Entry Correct Remove Supp Hist Qty/Breaks Supp/Cust Notes Multi UOM Audit Tax Config

Supplier Details  
 Supplier: CARTER Carter & Co.  
 Supplier Item Code: 87683-00  
 Supplier Item Desc: Gen-0 Mountain Bike  
 Supplier Priority: 2  
 Supplier Item Group: MS

Pack Details  
 Unit description: EACH  
 Conversion factor: 1.0000000  
 Pack Quantity: 1  
 Pack cubic size: 0.800000

Price Details  
 Last Buy Date: 01-NOV-2017  
 Current Buy Price: 475.0000  
 Per: 1  
 Currency: BBD  
 Tax Code: N  
 Conversion: 1.000000  
 Local Equivalent: 0.0000  
 Disc: 12.000 %  
 Disc Amt: 0.0000  
 Net Buy Price: 0.0000  
 New Buy Effective Date: 02-NOV-2017  
 New Buy Price: 420.0000  
 Last Change Date: 24-NOV-2017  
 Qty Purchased CM: 0  
 Purchases Cost CM: 0.00  
 Qty Purchased YTD: 0  
 Purchases Cost YTD: 0.00

Shipping Details  
 Economic Order Qty: 10  
 Shipping Method: WJ  
 Contract # Type: B  
 Supplier Contract #: 9797  
 Tariff Country Code: Z  
 Tariff Duty Rate: 0.00%

Lead Times  
 Est. Lead Time: 12  
 Last Lead Time: 11  
 QA Lead Time: 1

Connect easily with trading partners

## Suppliers

Any number of suppliers can be specified, allowing you to set them up for an item by region and record pertinent information, as well as track their performance levels.

The supplier attributes include:

- Supplier preference
- Supplier item code, description and conversion factor
- Minimum order quantity
- Supplier item group
- Pack quantity and volume for cost apportionment of the freight charges
- Supplier estimated and last lead-time
- Multiple quantity price breaks by supplier
- Foreign currency pricing

INV M138 Item Price Maintenance : SCT567 - 4th GEN Mountain Bike 26inch frame Alloy with disc brakes

Find Correct Entry Remove Promotion Archive Audit Tax Config

Details  
 Price Category:   
 Per: 1  
 Price Algorithm: 2  
 Discount Matrix: SH  
 Tax Code: 1  
 Item Desc: 4th GEN Mountain Bike  
 26inch frame  
 Alloy with disc brakes  
 Warehouse:   
 Price Last Change: 24-NOV-2017  
 Freight Charge Rate: 35.0000

Pricing Details

Quantity	Price	10.0000% GST	Price + GST
Price Level 0: 1.0000	1180.9091	118.09	1299.00
Price Level 1: 9999999.0000	1090.0000	109.00	1199.00
Price Level 2: 9999999.0000	999.0909	99.91	1099.00
Price Level 3: 9999999.0000	908.1818	90.82	999.00
Price Level 4: 9999999.0000	817.2727	81.73	899.00
Rec. Retail:	1180.9091	118.09	1299.00
RRP Incl. Tax:			1299.00

Promotion Details  
 From: 27-NOV-2017  
 To: 25-DEC-2017  
 Price: 908.1818 90.82 999.00

Maintain unique relationships with every customer

## Pricing

Pricing structures can be set within the Inventory Master record. You can maintain multiple pricing levels for each item as well as promotional prices for specified periods, and set up price algorithms and discount matrices. Tax rules are appropriately handled either at the item level or globally.

The basic pricing record of an item consists of a base price, multiple prices for different categories or quantity breaks, and the recommended retail price. Each item may have additional pricing structures defined by customer group.

Prices can be recalculated for items based on a mark-up value or by applying a percentage increase over current prices. Your current price list can be copied into a price maintenance environment where price changes can be manipulated before updating the current price lists.

Pronto Xi Inventory also allows you to keep track of your competitors' prices.

## Inventory master fields

### Item code

The item code is an alphanumeric field used to identify items throughout Pronto Xi.

### Description

Each item has a three-line product description. Extended note facilities provide unlimited text to be stored for internal and external purposes.

Search by item code, GTIN and product description is available.

### Product hierarchy

As a multilevel classification system, the product hierarchy allows a business to clearly define its product taxonomy. The five-level structure provides many benefits, including greatly enhanced inventory management and reporting capability via Pronto Xi modules such as Business Intelligence.

You can select how many of the five 'levels' of the hierarchy are turned on and flexible maintenance allows the hierarchy to be maintained from the top down, or bottom up, making it suitable for various business needs and industries.

Associated functions such as price maintenance, reordering and bulk item maintenance are able to leverage active hierarchy levels. Data integrity is maintained by enforcing the hierarchical relationships between each 'child' and 'parent'.

## Product group

You can categorise items by item groups, which allows for:

- Recording sales history
- Posting to the general ledger for sales, cost of goods sold and more
- Reporting
- Dissection of prices, discounts and promotions
- Calculation of sales representative commissions
- Inventory valuation

Posting of inventory transactions to the general ledger is fully automated.

Prices, discounts and promotions can be established based on item groups, for example, contract price by customer/item group, and promotional discount by customer type/item group. Special commission rates for sales representatives by item group can also be established.

### Attributes

Item attributes help extend the description of a product through a structured and ordered categorisation. More importantly, they can be used as data points to 'slice and dice' sales data to uncover customers' buying habits and preferences. These insights can then be put to use in creating sales promotions, forecasting purchases and exchanging data with Avenue and ecommerce platforms.

### APN

An Alternative Part Number (APN) for a specific item can be used to contain the code of another item, which is cross-referenced when the item is superseded.

### GTIN

The universally recognised GTIN (Global Trade Item Number) is more commonly known as the industry-accepted barcode for a specific item. A single item can have multiple GTINs to reflect various units of measure, such as consumer unit, traded unit or pallet.

Both APN and GTIN can be used for enquiry, reporting and scanning directly into Pronto Xi Inventory.

### Units, packs, sizes and weights

Multiple units of measure for the sale, warehouse storage and procurement of each inventory item can be used. Pack weights and cubic dimensions can also be stored.

### Traceability

Pronto Xi Inventory allows for various means of traceability:

- **Serial-tracked** – can be used when the goods are received, at despatch, or both
- **Lot-tracked (for batch tracking)** – allows for full traceability from purchase to product recall if required
- **Purchase-tracked** – tracks by purchase order number

### Import tariffs/excise tax

When an item is imported from a foreign supplier, the tariff charged is dependent upon the country of the supplier and the nature of the item.

Pronto Xi Inventory uses a 'country code' to identify the country of origin, and a 'tariff code' to identify the class of the item for tariff purposes. The country code is stored against the supplier while the tariff codes are held at the item level.

## Inventory transactions

Comprehensive transactional details are held for each item and warehouse, including control numbers (eg. serial number, lot number), source document and financial information. Users can define the retention period for historical data files.

## Issue/adjust inventory

Most inventory issues occur within other modules such as Pronto Xi Shopfloor Manufacturing and Sales. However, in some instances there may be a need to record inventory issues manually. These can be recorded against:

- Manufacturing (Factory/WIP or Work Order)
- Project (General Ledger or Service Call)
- General Ledger
- Maintenance
- Inventory Adjustment
- Receipts from Purchase Order or Work Order

This function is normally performed within the Purchasing module, but Pronto Xi Inventory provides a fast and simple option to receive goods from a supplier that have been purchased without processing a formal purchase order.

Goods that have been allocated to a work order are sometimes returned unused. This option can be used to return the components back into inventory.

Manufactured Goods Receipt is a simple method of recording the receipt into an inventory of manufactured items. It can be used to receive manufactured items without using the BOM to create and process a work order.

## Quality analysis

Goods for release can be held until they have passed through your quality checks. If goods do not pass the checks, Pronto Xi Inventory allows you to reject, scrap or return the items to the supplier.

## Reorder processing

Pronto Xi Inventory provides reordering functions to automatically create purchase orders and work orders according to selected criteria. A review process can be undertaken prior to the creation of the actual orders.

Reorder Reports, which calculate the reorder quantities needed to satisfy commitments, minimum inventory levels, maximum inventory levels, or a combination thereof, can be generated. Average sales history, average warehouse demand or forecast can also be used to create planned requirements.

The reorder processing calculation considers a number of factors, including:

- Minimum and maximum days cover
- Minimum and maximum inventory levels
- Economic order quantity
- Lead time
- Current inventory level, including current commitments
- Items on order from supplier
- In transit
- Internal requisitions

Type	Status	Cont/Blanket	Notes	Revision	Item Code	Whse	Sugg Supplier	Reorder Qty	Current Buy Price	Line Total
I					10-FEB-2015 2-COMP7	MEL	000034	5,000	10,000	50,00
I					10-FEB-2015 FBINDENT6	AZE	000034	73,000	1,000	73,00
I					10-FEB-2015 FBINDENT6	MEL	000034	8,000	1,000	8,00
I					10-FEB-2015 FBINDENT6	SP4	000034	7,000	1,000	7,00
I					10-FEB-2015 AC INDENT	MEL	00018	8,000	2,000	16,00
I					10-FEB-2015 BL INDENT	MEL	00018	20,000	55,000	1,100,00
I					10-FEB-2015 BL INDENT2	MEL	00018	11,000	55,000	605,00
I					10-FEB-2015 BL INDENT3	MEL	00018	18,000	55,000	990,00
I					10-FEB-2015 BL INDENT4	MEL	00018	13,000	55,000	715,00
I					10-FEB-2015 NEWINDENT	MEL	00018	5,000	0,000	0,00
I					10-FEB-2015 SP42	NDC	00032	1,000	50,000	50,00
I					10-FEB-2015 SP4	NDC	00046	1,000	80,000	80,00
I					10-FEB-2015 WJINDENT1	MEL	40003.5	2,000	10,000	20,00
I					10-FEB-2015 WJINDENT3	MEL	40003.5	2,000	10,000	20,00
I					10-FEB-2015 CC INDENT-18	COOP	ABC	2,000	0,000	0,00

Optimise your stock levels

## Budgets

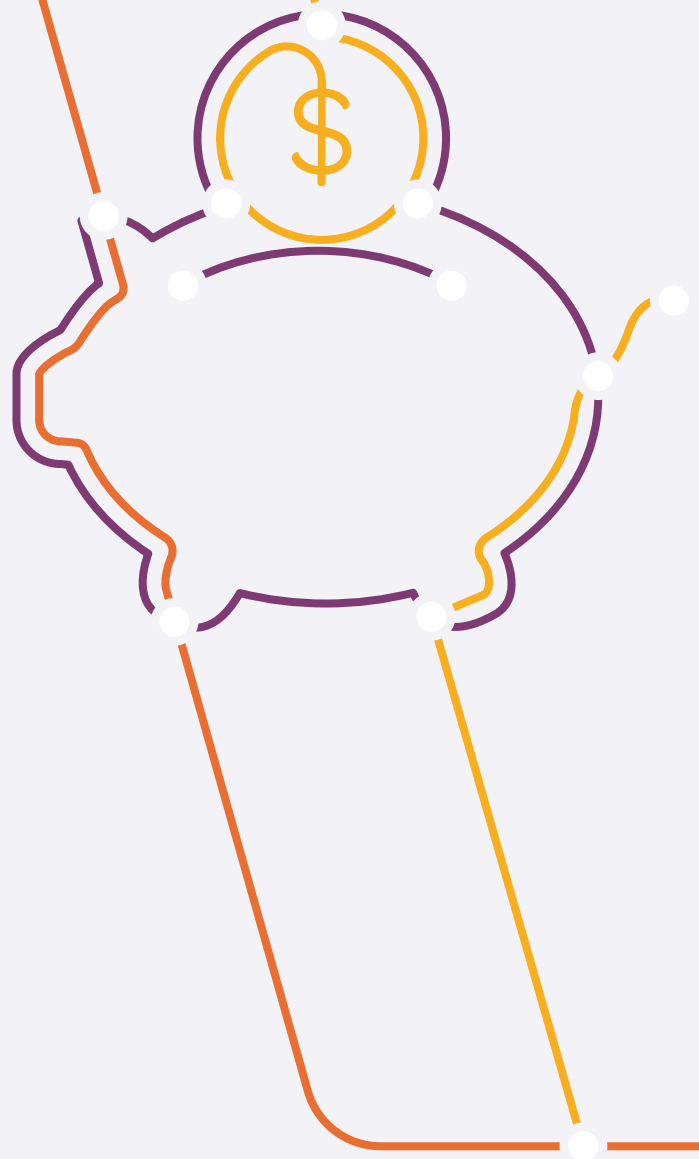
Pronto Xi Inventory holds budget information at the item level, planning group level or item group level.

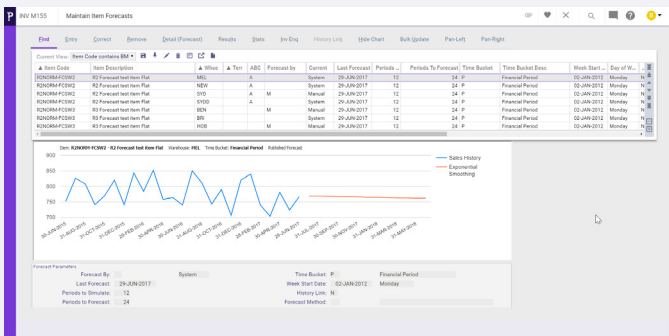
Budgets can be manually entered for each period of the year, and spread factors to apportion the total annual amount based on the relative weighting/ratio as specified for each period can be used. Numerous reports are available to compare budgets against actual sales as well as budget listings.

## Costing

Various costs, such as Standard, Average, FIFO and Actual, can be maintained for posting purposes, inventory valuation and sales margin reporting. Inventory valuation reports can be produced at any time using the costing method of your choice, and if necessary costs can be recalculated based on a range of factors.

Landed costs are calculated as part of the shipment costing process (please refer to [Pronto Xi Accounts Payable](#) for more information).





## Kits

Kits are a list of components made up from saleable items that can be optionally selected during the sales order process. For example, a personal computer, keyboard, monitor and mouse can be sold individually or as a kit. Various categories of kit component lines are accommodated, including:

- Mandatory
- Optional
- Variable quantity
- Grouped options

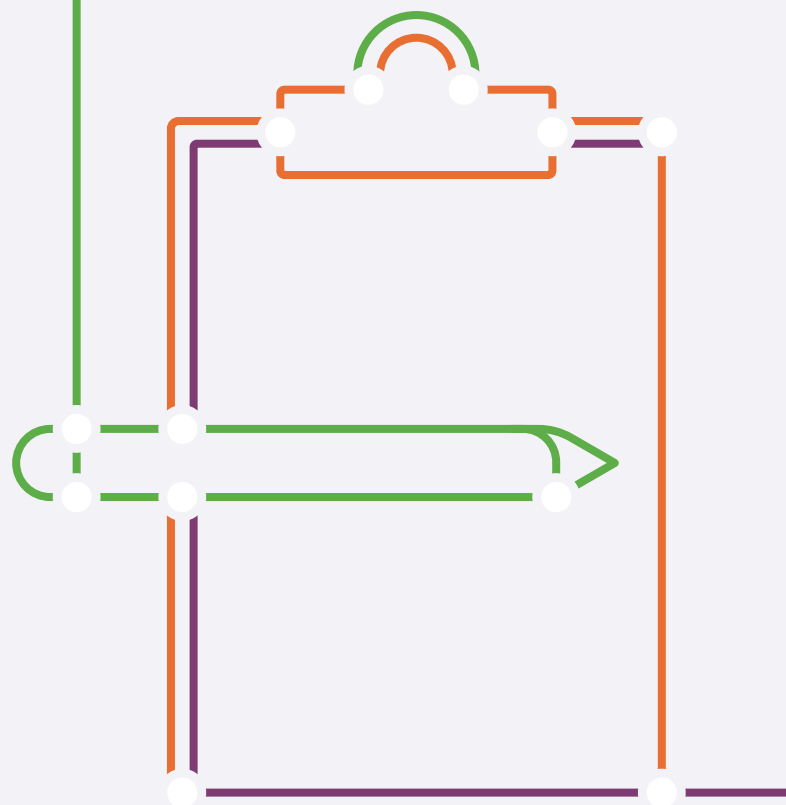
Kit pricing can either be generated from the components or simply selected from the item price record.

## Stocktake

To help you measure your inventory accuracy, a snapshot view of your holding can be provided, with any adjustments automatically reflected in the general ledger. Wall-to-wall and cycle counting techniques are supported to comply with company policies, as well as data capturing techniques such as tickets, bar coding, radio frequency (RF) and cards.

The stocktake process can include:

- **Initial pre-stocktake check** – reports any outstanding inventory-related transactions that may need to be completed prior to the final snapshot of the book inventory
- **Prepare stocktake** – creates a snapshot file of your inventory holding and can produce a Stocktake Report (a unique stocktake control code is generated as part of this process to allow for easy identification and parameters)
- **Stocktake refreeze** – resets the snapshot file if further reprocessing has taken place that will affect the book inventory of the original snapshot
- **Enter counts** – employs multiple data entry techniques, including manual
- **Produce reports** – to assist with reconciliation, including Uncounted Items, Variation and Valuation
- **Update stocktake** – performs an update once the stocktake is finalised to make all necessary adjustments to the stock ledger and general ledger for the appropriate accounting period





### The right call

We're always ready to adapt Pronto Xi to perfectly fit your unique requirements.

For more information on what we can do for your business, contact us at 1300 PRONTO (1300 77 66 86) or find us at: [www.pronto.net](http://www.pronto.net)



**PRONTO MALAYSIA PARTNER**

**SL INFORMATION**  
**603-7804-0778**  
**marcom@slinfo.com.my**  
**www.slinfo.com.my**

**About Pronto Software.**

We are an Australian developer of award winning business management and analytics solutions. Pronto Xi, our Enterprise Resource Planning (ERP) software, integrates accounting, operational and mobile features in a single system – optimising business processes and unlocking actionable insights. That's why for more than 40 years, over 1,700 Australian and global organisations, across a wide range of industries, have trusted Pronto Xi to simplify their most complex challenges.

With Headquarters and our Development Centre located in Melbourne, we have support offices and consultants based across Australia, as well as a global network of Resellers and Solution Partners.

Specialised business units within Pronto Software have the expertise to assist you with pivotal technology – Digital Commerce with Pronto Woven, Cloud and Hosting services with Pronto Cloud and Business Intelligence solutions with Pronto iQ.

When you choose Pronto Software, you gain a team with deep industry experience, giving us the ability to understand your specific needs and build innovative solutions that drive business growth and revenue.

Contact us to learn how we can help you achieve business goals: [pronto.net](http://pronto.net)